

HENRY

Hydraulic Engineering Repository

Ein Service der Bundesanstalt für Wasserbau

Conference Paper, Published Version

Hein, Hartmut; Mai, Stephan; Barjenbruch, Ulrich

Long-term Changes of the Tidal Amplitudes and Phases in the Elbe Estuary

Zur Verfügung gestellt in Kooperation mit/Provided in Cooperation with:
Kuratorium für Forschung im Küsteningenieurwesen (KFKI)

Verfügbar unter/Available at: <https://hdl.handle.net/20.500.11970/99502>

Vorgeschlagene Zitierweise/Suggested citation:

Hein, Hartmut; Mai, Stephan; Barjenbruch, Ulrich (2014): Long-term Changes of the Tidal Amplitudes and Phases in the Elbe Estuary. In: Lehfeldt, Rainer; Kopmann, Rebekka (Hg.): ICHE 2014. Proceedings of the 11th International Conference on Hydroscience & Engineering. Karlsruhe: Bundesanstalt für Wasserbau. S. 783-790.

Standardnutzungsbedingungen/Terms of Use:

Die Dokumente in HENRY stehen unter der Creative Commons Lizenz CC BY 4.0, sofern keine abweichenden Nutzungsbedingungen getroffen wurden. Damit ist sowohl die kommerzielle Nutzung als auch das Teilen, die Weiterbearbeitung und Speicherung erlaubt. Das Verwenden und das Bearbeiten stehen unter der Bedingung der Namensnennung. Im Einzelfall kann eine restriktivere Lizenz gelten; dann gelten abweichend von den obigen Nutzungsbedingungen die in der dort genannten Lizenz gewährten Nutzungsrechte.

Documents in HENRY are made available under the Creative Commons License CC BY 4.0, if no other license is applicable. Under CC BY 4.0 commercial use and sharing, remixing, transforming, and building upon the material of the work is permitted. In some cases a different, more restrictive license may apply; if applicable the terms of the restrictive license will be binding.



Long-term Changes of the Tidal Amplitudes and Phases in the Elbe Estuary

H. Hein, S. Mai & U. Barjenbruch
Federal Institute of Hydrology, Koblenz, Germany

ABSTRACT: During the last century the response of the oceans to tidal forces has changed significantly, changes of tidal amplitude and/or phase have taken place over large scales. Continuous long-term simulations of the Elbe estuary are discussed for present-day conditions as well as for future conditions. The simulations are conducted with a limited area model of the Elbe estuary, which is offline nested into a model of the North Sea. In the North Sea and the estuary currents and sea-levels are modelled by the hydro-numerical HAMBURG Shelf Ocean Model (HAMSOM).

The results of the long-term modelling confirm the larger scale estimations. Physical inherent changes of tidal phases and amplitudes have been proved in the Elbe Estuary. With the rising sea level, the wave speeds and wave lengths increase. This can cause modifications of the reflections of the tides. Additionally energy dissipation by bottom friction is reduced. Both processes act together and result in the migration of complex patterns of non-linear changes in the tides with climate change.

Despite uncertainties associated with the SLR over the next century, modifications of the tides in coastal areas and estuaries implicate modifications of the coastal management by estimation of adapted design levels, in the availability of tidal renewable energy and dredging requirements.

Keywords: Sea Level Rise, Harmonic Analysis, Tidal Amplitudes, Tidal Phases, Numerical Modelling

1 INTRODUCTION

In coastal regions and estuaries physical processes influence many economic, ecologic processes and also security issues. Global climate change has high potential to influence both, the persistence and the transport pathways of water masses and its constituents in tidal waters and estuaries (Dietrich et al., 2013). Sensitivity studies (e.g. Mai et al., 2004) show the variation of tidal water levels, of significant wave heights and the morphology at the southern German Bight as the result of climate change. In the long term context of climate change, these physical processes are subject to changes, too (Hein et al., 2011b).

It is widely accepted, that the climate-related sea level rise (SLR) influences the long-term coastal processes. An almost linear secular rise of about 1-2 mm per year (e.g. Wahl et al., 2010, Hein et al. 2011c, Albrecht et al. 2012) has already been observed in the southern German Bight. The future acceleration of global SLR is expected (Solomon et al. (2007). Historic acceleration for the German Bight is not to be found significant (Hein et al. 2010).

The expected future changes of the global sea level in the 21st century are mainly determined by the steric expansion of the ocean due to global warming. Additionally increasing fresh water supply from melting of the two ice sheets over Greenland and the Antarctic and from inland deglaciation accelerates the SLR in the 21st century. However, the regional sea level rise must be determined by the regional distribution of globally added melt water masses due to gravitational effects and also by barotropic and baroclinic ocean dynamics due to changing density distributions (Mathis, 2013). In the Elbe estuary the glacial isostatic adjustment causes land subsidence in order of 5 cm to 10 cm (Hein et al., 2011c). For this model study, we use the approach from Mathis (2013), who implements the sea level rise at the lateral boundary of the North Sea model in form of a scenario.

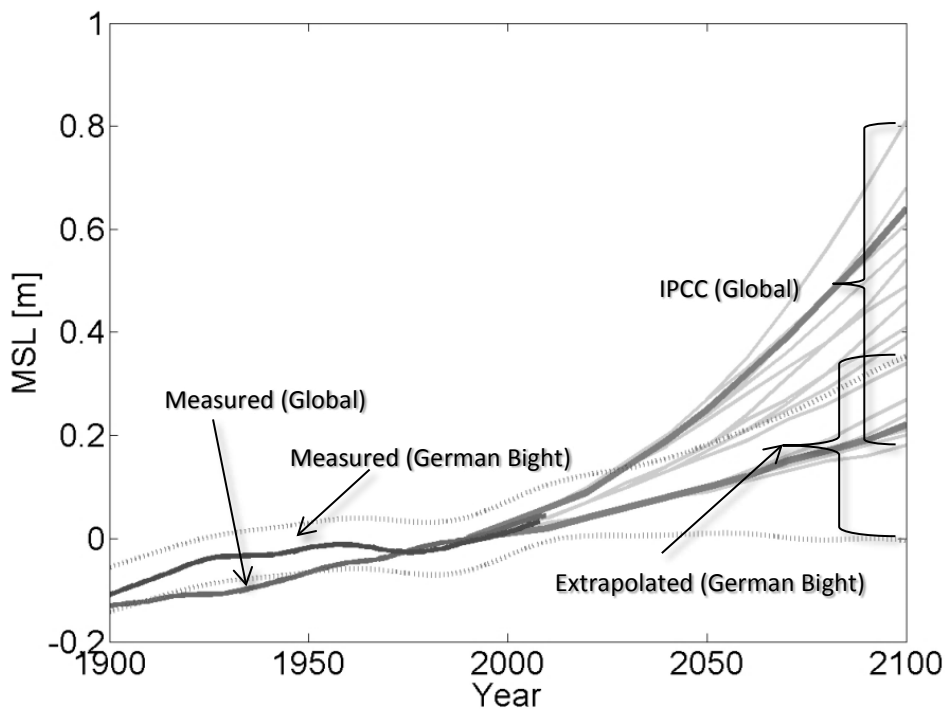


Figure 1. Sea level rise, measured and extrapolated (dashed line) for the German Bight, observed global sea level rise, IPCC estimations.

Figure 1 shows the global as well as the regional SLR. The SLR in the German Bight is estimated from tide gauge measurements. The dashed bandwidth images the extrapolation of the observed SLR (Hein et al., 2010, 2011c). The historic global SLR is estimated by observations (Church and White, 2011). The global future estimations are taken from the IPCC-report (Solomon, 2007).). Thicker lines highlight the A1B scenario. The regional sea levels rise is a bit less than the global SLR. The non-linear statistical extrapolation can only explain sea level rise of $O(35 \text{ cm})$ up to the end of the century. However, the physical processes behind the future sea level rise are not included in the statistics.

Sea level is not level (Gehrels & Long, 2008). Variability of the SLR acts on almost all scales - in terms of both - time and space. Beneath the typical tidal scales, which are commonly semi-diurnal (M2) to 19th yearly (Nodaltide), several additional scales are representative for typical atmospheric timescales of months to several years (Dangendorf et al., 2012). The SLR is positively correlated with the changes of the NAO on time-scales of 4 to 7 years (Hein et al., 2011b, Dangendorf et al., 2012). Variability on scales in the range of the Nodaltide is indicated since 1930 and before 1900; periods in order of 30 to 40 years are important, their amplitudes increase with time. Additionally, periods of approximately 60 to 80 years are present in the sea level of the German Bight (Hein et al., 2011b).

During the last century the response of the oceans to tidal forces has changed significantly, changes of tidal amplitude and/or phase have taken place over large scales (Müller et al., 2011). In the North Sea region the response of the M2 tide to sea level rise is predicted to be greatest in the southern German Bight, coming with a lot of non-linearity (Pickering et al. 2012). So, it is a legitimate question asking for changes of the tidal constituents at coastal sections or inside estuaries, e.g. the Elbe estuary.

The Elbe River is one of the largest rivers in Europe $O(1000 \text{ km})$, the tidal influence in the estuary reaches $O(150 \text{ km})$ inward from the centre of the German Bight to the weir in Geesthacht. The hydrological regime of the Elbe estuary is dominated by tides, mainly by the M2 tide and their overtides. The amplitude of the M2 tide in the Elbe estuary is about 1.5 meters. The amplitudes of the M2 overtides are one fourth of that. The S2 tide is also prominently detectable with amplitude of 0.3 meters.

2 METHODS

2.1 Simulations

The changes of the tides are derived by the use of long-term regionalized coupled numerical modeling of atmosphere and ocean (Hein et al. 2013); the so called model chain (MC) is used. The MC implemented in the research program KLIWAS of the German Federal Ministry of Transport, Building and Urban De-

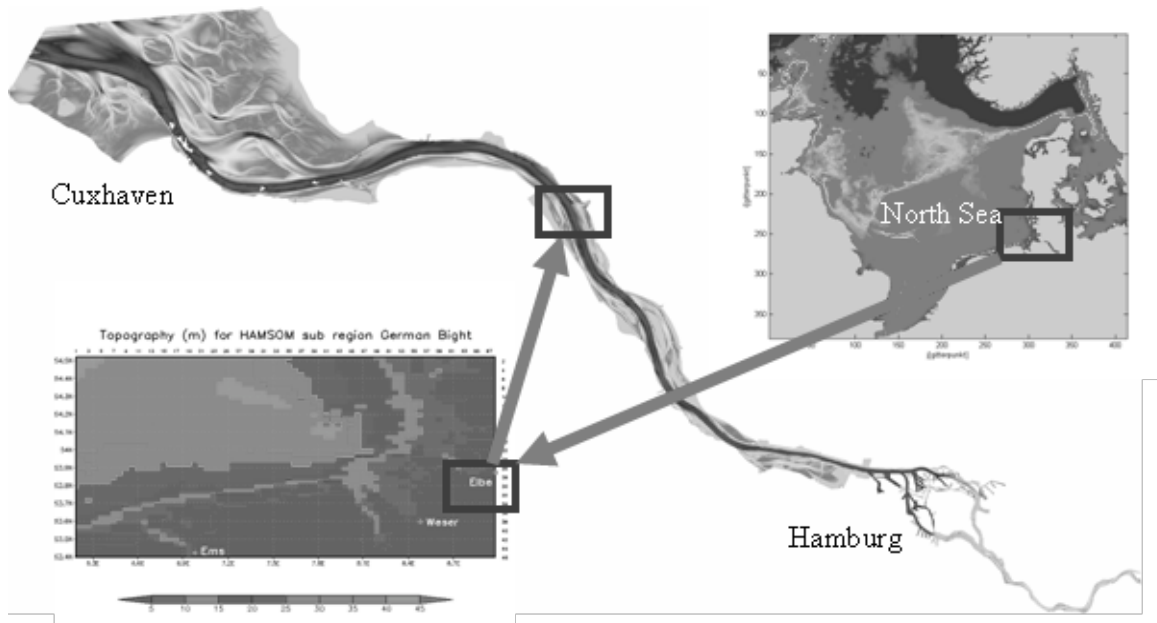


Figure 3. Regional topography used by the simulations.

2.2 Harmonic Analysis of the model results

The amplitude and phase for the sinusoids representing of each known constituent of the modelled time series of each kilometer in the estuary must be estimated. This can be done by solving a system of linear equations (Foreman& Henry, 1989).

$$z_i = A_0 + \sum_{j=1}^M A_j \cos(\sigma_j t_i - \Phi_j) \quad (1)$$

In equation (1) A_j , σ_j and Φ_j are the amplitude, frequency and phase of tidal constituent j constructing the simulated water level z_i . Equation (1) can be solved by introducing two new unknown S_j and C_j resulting in the linear formulation.

$$A_j \cos(\sigma_j t_i - \Phi_j) = C_j \cos(\sigma_j t_i) + S_j \sin(\sigma_j t_i) \quad (2)$$

$$A_j = (C_j^2 + S_j^2)^{1/2} \text{ and } \varphi_j = \arctan\left(\frac{S_j}{C_j}\right)^{1/2} \quad (3)$$

Equation (2) can be simply solved by least squares or if the time series is short and noisy time with weighed solutions (robust fit). The following results are restricted to six of the main components, which are the M2, S2, M4, N2, K1, O1. If necessary the nodal tide is reduced by the use of polynomial filtering.

3 RESULTS AND DISCUSSION

3.1 Changing tides at the mouth of the estuary

The results of the long-term modelling confirm the larger scale estimations of Müller et al. (2011). Physical inherent changes of tidal phases and amplitudes have been proved at the mouth of Elbe Estuary. Figure 4 shows the long term changes of the 6 main components, which are normalized by their today mean and standard deviation. The importance of the Nodal cycle is noticeable. The increase of the amplitude of the M2-Tide due to SLR must be noted. But in contrast the M4-tide decreases, which indicates the reduction of overtides in the German Bight.

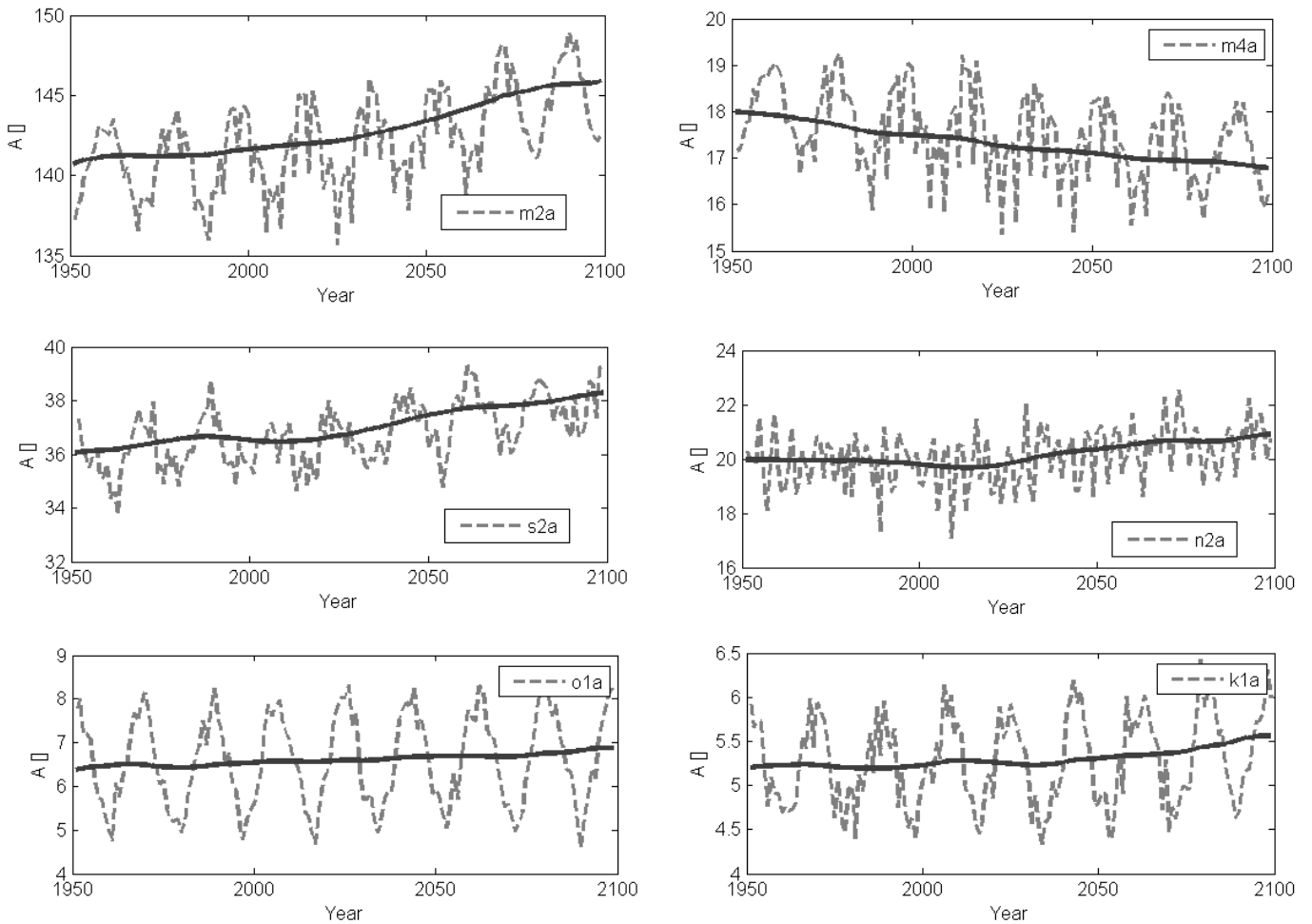


Figure 4. Changes of the amplitudes of six tidal main components.

3.2 Changing tidal characteristics: Hamburg to the mouth of the estuary

One step further is the long term modelling of the estuary and the analysis of the results. First of all Figure 5 shows the overall changes of the tidal characteristics, represented by the tidal high-water (THW), tidal low-water (TLW) and the tidal range (TR). Here, the uncertainties coming from the IPCC report are included. The lower area in the pictures represents the changes in the near future (2030 – 2049) relative to today's situations (1980 – 1999). The changes of the THW and TLW are in the magnitude of the change in the MSL. However, the combining effect of a bit faster rising THW and a decreased rise of the TLW let the tidal range rise with the SLR.

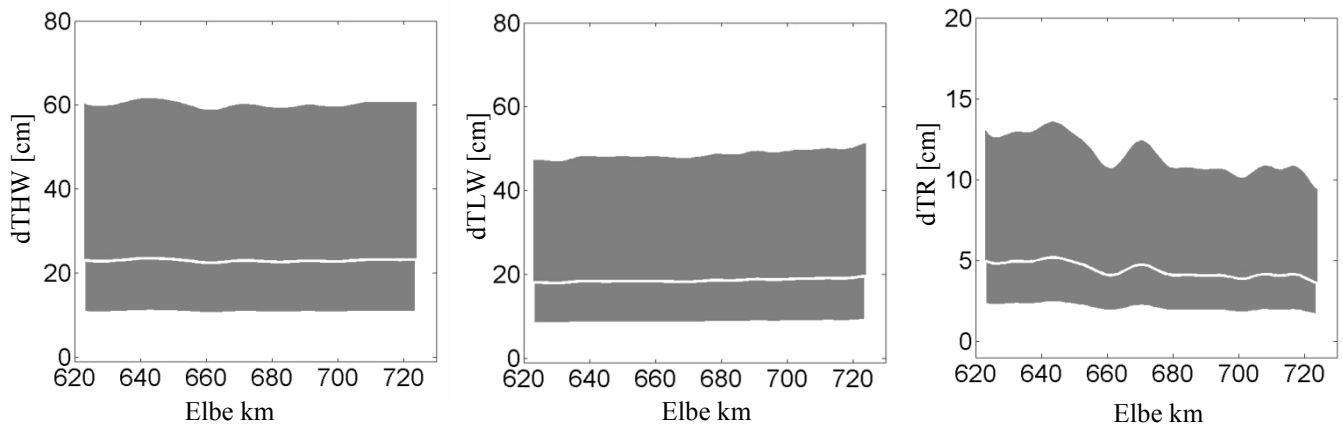


Figure 5. Changes of the tidal characteristics between Hamburg and Cuxhaven; a) THW, b) TLW, c) TR

The upper area in the pictures represents the changes in the far future (2080 – 2099) relative to today's situations (1980 – 1999). The situation is now clearer: the faster rising THW and the decreased rise of the TLW let the tidal range rise with the SLR. Also the effect of a stronger amplifying of the tides directed to the inside of the estuary is documented. Especially, taken the high-end scenario pronounced changes of the TR toward Hamburg are modelled. Noticeable is the non-linear changes of the TR along the estuary, it is worthwhile to look into these changes more closely by analysis of the tidal constituents.

3.3 *Changing tidal constituents: Hamburg to the mouth of the estuary*

Figure 6 illustrates how the change of the tidal constituent along the estuary has to be expected in the high end scenario until the end of the century. For five of the components the amplification of the tidal amplitudes continues in the estuary, but with decreasing tendency in upstream direction until the port of Hamburg, where a strong amplifying peak establishes. In contrast to the other constituents the patterns of the changes of the first M2 overtide (the M4) is different. Here the amplitude is lower at the mouth and in the outer part of the estuary, but increases downstream the port of Hamburg. This is documented in the amplitudes as well as in the shift of the tidal phases.

With SLR, the wave speed and wave length increase, causing changes in the reflections of the tides.

The following changes in the self-oscillations are documented in the simulation (Figure 6). Caused by the SLR the tidal flats are longer flooded. Therefore in cross-sections energy dissipation by bottom friction is less important. The overall longer flooding of the tidal flats decreases the effective mean depth of the estuary and also causes the reduction of the funneling effect. All mechanisms in combination result in the migration of complex patterns of non-linear changes in the tides with SLR (Pickering et al. 2012).

4 CONCLUSIONS

Global climate change in form of SLR has high potential to influence the physical processes in estuaries. For the Elbe estuary nonlinear effect of the rise of the sea level induce changes of the tidal constituents in the German Bight. These changes of the tidal constituents continue well into the estuary, which results in the shift of the spatial distributions of the tides. In future the tides amplify stronger than today in the upstream direction. The reflections of the tidal wave in the estuary will differ in contrast to today's situation. Despite uncertainties associated with the SLR over the next century, modifications of the tides in coastal areas and estuaries implicate modifications of the coastal management by estimation of adapted design levels, in the availability of tidal renewable energy and dredging requirements (Pickering et al. 2012). In particular this also applies to the Elbe estuary.

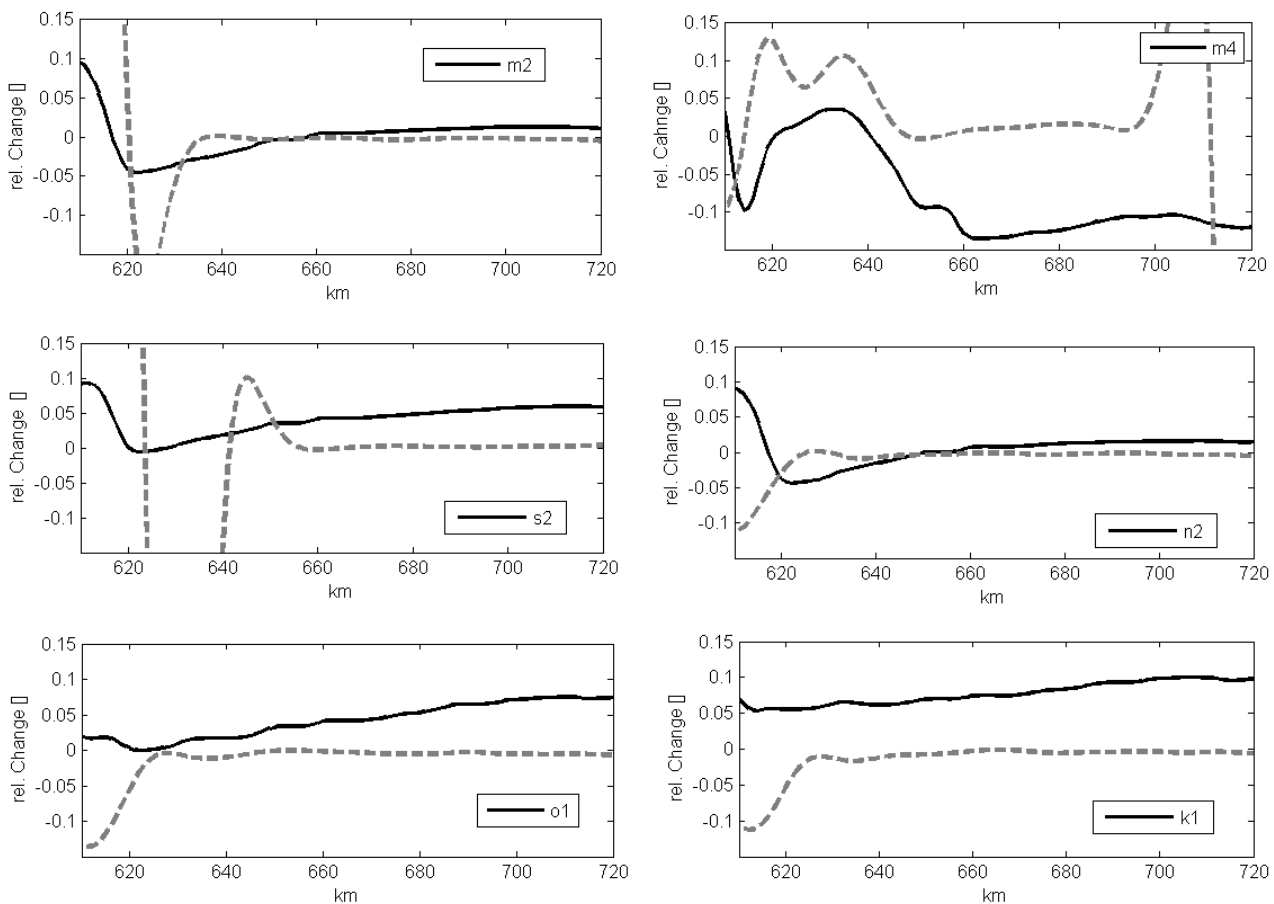


Figure 6. Relative changes of the tidal constituent between Hamburg and Cuxhaven in the far future (2080- 2099).

NOTATION

A_j ,	amplitude of tidal constituent j
σ_j	frequency of tidal constituent j
Φ_j ,	phase of tidal constituent
THW	Tidal High Water
TNW	Tidal Low Water
TR	Tidal Range
M2, S2, M4, N2, K1, O1	tidal constituent

REFERENCES

- Albrecht, F., Wahl, T., Jensen, J., & Weisse, R. (2011). Determining sea level change in the German Bight. *Ocean Dynamics*, 61(12), 2037-2050.
- Backhaus J. O. (1985). A three-dimensional model for the simulation of shelf sea dynamics. *Dt. Hyd. Z.*38, 165–187.
- Church, J. A. and N.J. White, (2011). Sea-level rise from the late 19th to the early 21st Century. *Surveys in Geophysics*, 32, 585-602.
- Dangendorf, S., H. Hein, J. Jensen, S. Mai, C. Mudersbach, T. Wahl, (2012). Mean Sea Level Variability and Influence of the North Atlantic Oscillation on Long-term Trends in the German Bight., *Water*, Special Issue: Flood Risk Management.
- Dietrich, S., Winterscheid, A., Wyrwa J., Hein H, Hein, B. and Schöl A. (2013). Development of an interdisciplinary model cluster for tidal water environments, *Geophysical Research Abstracts Vol. 15*, EGU2013-5119, EGU General Assembly 2013.
- Foreman, M. G. G., & Henry, R. F. (1989). The harmonic analysis of tidal model time series. *Advances in water resources*, 12(3), 109-120.
- Gehrels, R., & Long, A. (2008). Sea level is not level. *Geography*, 93(Part 1).
- Hein, H., Karfeld, B., Pohlmann, T. (2007). Mekong water dispersion. Measurements and consequences for the hydrodynamic modelling, *J. of Water Res. and Env. Eng.*, Special Issue, August 2007, 21 – 28.
- Hein, H. (2008). Vietnam Upwelling - Analysis of the upwelling and related processes in the coastal area off South Vietnam, PhD Thesis, <http://www.sub.uni-hamburg.de/opus/volltexte/2008/3931/>

- Hein, H., Weiss, R., Barjenbruch, U., & Mai, S. (2010). Uncertainties of tide gauges & the estimation of regional sea level rise. In Proc. of the Int. Conf. Hydro.
- Hein, H., Mai, S., Barjenbruch, U., (2011a). Interaction of Wind Waves and Currents in the Ems Estuary. Int. Journal of Ocean and Climate Systems, vol. 2, no. 4 2011a.
- Hein, H., Mai, S., Barjenbruch, U. (2011b). Coastal long term processes, tidal characteristics and climate change, 5th International Short Conference on Applied Coastal Research, Aachen, http://www.iww.rwth-aachen.de/fileadmin/internet/scacr/SCACR_2011_Proceedings.pdf, S. 214 - 221.
- Hein, H., Mai, S., Barjenbruch, U.(2011c), What Tide Gauges Reveal about the Future Sea Level, Proc. of the 4th Conf. Acqua Alta, http://acqua-alta.de/fileadmin/design/acqua-alta/pdf/abstracts/paper/13_10/Hein_Harmut_full_papers.pdf
- Hein, H., Mai, S., Barjenbruch, U., (2012). Uncertainties of Drying Periods of Coarse Coastal Climate Impact Models. Proc. of the 2nd IAHR Europe Conf., München.
- Hein, H., Hein, B., & Pohlmann, T. (2013a). Recent sediment dynamics in the region of Mekong water influence. Global and Planetary Change. 110, 183-194.
- Hein, H., Mayer, B., Mai, S., Barjenbruch, U. (2013b). Process based downscaling of a global climate model into the Elbe estuary. Proc. of 6th Int. Conf. on Water Resources and Environment Research (ICWRER), Koblenz, 2013.
- Lingemann, I, Nilson E., Krahe P. (2012). Änderungen des Abflussregimes im 21. Jahrhundert: Aktuelle Ergebnisse des Forschungsprogramms KLIWAS, Kolloquium, Dresden.
- Mai, S. (2004). Klimafolgenanalyse und Risiko für eine Küstenzone am Beispiel der Jade-Weser-Region: Climate impact and risk assessment for the coastal zone, Doctoral dissertation, Franzius-Inst. für Wasserbau und Küsteningenieurwesen.
- Mathis, M., (2013). Projected Forecast of Hydrodynamic Conditions in the North Sea for the 21st Century, <http://ediss.sub.uni-hamburg.de/volltexte/2013/6169/>
- Müller, M., Arbic, B. K., & Mitrovica, J. X. (2011). Secular trends in ocean tides: Observations and model results. Journal of Geophysical Research: Oceans (1978–2012), 116(C5).
- Spek, van der (2013). Data poor environments: Uncertainty propagation in hydrodynamic modelling, Master thesis, Delft University of Technology, 2013.
- Solomon, S. (Ed.). (2007). Climate change 2007-the physical science basis: Working group I contribution to the fourth assessment report of the IPCC (Vol. 4). Cambridge University Press.
- Pohlmann, T. (2006). A meso-scale model of the central and southern North Sea: Consequences of an improved resolution. Continental Shelf Res. 26, 2367-2385.
- Pickering, M. D., Wells, N. C., Horsburgh, K. J., & Green, J. A. M. (2012). The impact of future sea-level rise on the European Shelf tides. Continental Shelf Research, 35, 1-15.
- Wahl, T., Jensen, J., Frank, T., & Haigh, I. D. (2011). Improved estimates of mean sea level changes in the German Bight over the last 166 years. Ocean Dynamics, 61(5), 701-715.